



# MASTER LEDtube EM/ Mains



## MASTER LEDtube 600mm HO 8W865 T8

The Philips MASTER LEDtube integrates a LED light source into a traditional fluorescent form factor. Its unique design creates a perfectly uniform visual appearance which cannot be distinguished from traditional fluorescent. This product is the ideal solution for up lighting in general lighting applications.

### Warnings and Safety

• -

### Product data

General Information	
Cap base	G13 ROT
Nominal lifetime	75,000 h
Switching Cycle	200,000
Lighting Technology	LED
Flux measurement reference	Sphere
Light Technical	
Colour Code	865 [CCT of 6500K]
Beam angle (nom.)	160 degree(s)
Luminous Flux	1,050 lm
Luminous efficacy (rated) (nom.)	131 lm/W
Colour designation	Cool Daylight
Correlated Colour Temperature	6500 K
Colour consistency	<6
Colour rendering index (CRI)	83
LLMF at end of nominal lifetime (nom.)	70 %
Flickering value (PstLM)	0.5

Stroboscopic effect	0.2
Photobiological safety according to EN 62471	RG0
Operating and Electrical	
Line Frequency	50 to 60 Hz
Input frequency	50 to 60 Hz
Power Consumption	8 W
Lamp current (max.)	42 mA
Lamp current (min.)	36 mA
Starting time (nom.)	0.5 s
Warm-up time to 60% light	0.5 s
Power Factor (Fraction)	0.9
Voltage (nom.)	220-240 V
LED alternative to fluorescent lamp power	18 W
Inrush current at mains	7
Max. lamp no. on MCB B type 10A – Mains	105
Max. lamp no. on MCB B type 10A – EM ballast without Compensation Capacitor.	125

# MASTER LEDtube EM/Mains

Max. lamp no. on MCB B type 10A – EM ballast with Compensation Capacitor.	30
Max. lamp no. on MCB B type 16A – Mains	170
Max. lamp no. on MCB B type 16A – EM ballast without Compensation Capacitor.	290
Max. lamp no. on MCB B type 16A – EM ballast with Compensation Capacitor.	49
Ballast Compatibility	EM/Mains

## Temperature

Ambient temperature range	-20°C to 45°C
T-Case maximum (nom.)	50 °C

## Controls and Dimming

Dimmable	No
----------	----

## Mechanical and Housing

Lamp Finish	Frosted
Bulb material	Plastic
Product length	600 mm
Bulb shape	T8

## Approval and Application

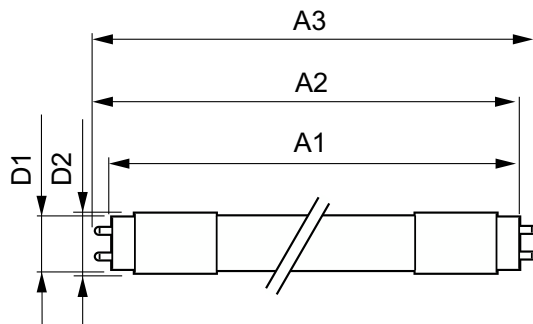
Energy Efficiency Class	E
-------------------------	---

Energy-saving product	Yes
Approval marks	RoHS compliance CE marking KEMA Keur certificate ENEC certificate
Energy consumption kWh/1,000 hours	8 kWh
EPREL registration number	1571693
CE mark	Yes
EU RoHS compliant	Yes

## Product Data

Order product name	MAS LEDtube 600mm HO 8W865 T8
Full product name	MASTER LEDtube 600mm HO 8W865 T8
Full EOC	871869669751100
Order code	69751100
Material no. (12 NC)	929001307202
Numerator – quantity per pack	1
Net Weight (Piece)	0.100 kg
EAN/UPC – Product/Case	8718696697511
Numerator – packs per outer box	10
EAN/UPC - Case	8718696697528

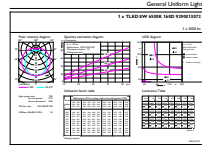
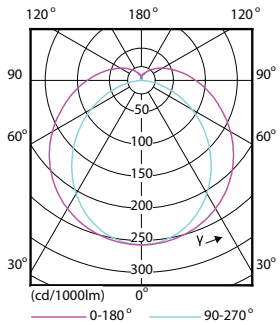
## Dimensional drawing



Product	D1	D2	A1	A2	A3
MAS LEDtube 600mm HO 8W865 T8	25.78 mm	28 mm	588.5 mm	595.5 mm	602.5 mm

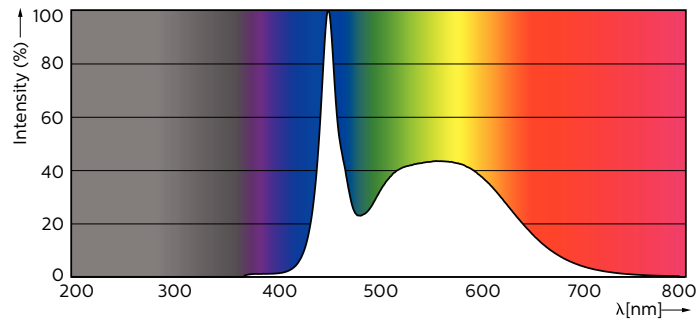
# MASTER LEDtube EM/Mains

## Photometric data



Light Distribution Diagram - MAS LEDtube 600mm HO 8W865 T8

General uniform lighting - MAS LEDtube 600mm HO 8W865 T8

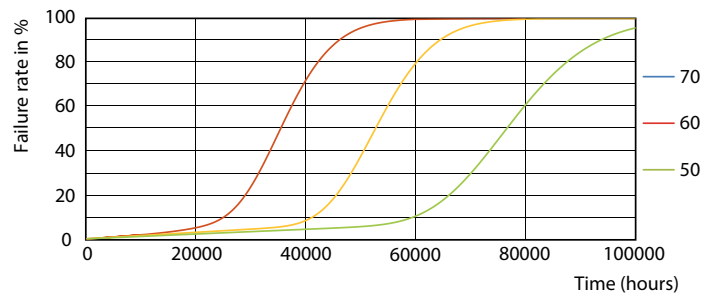


Spectral Power Distribution Colour - MAS LEDtube 600mm HO 8W865 T8

## Lifetime



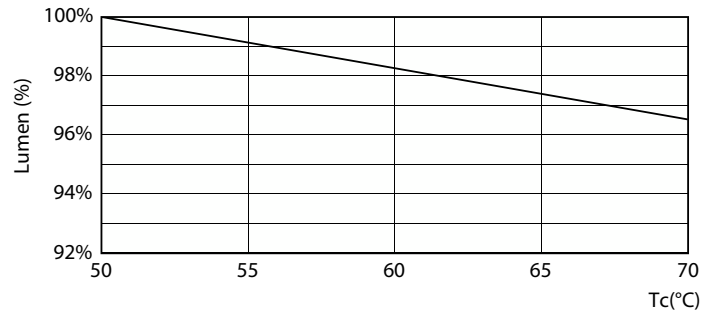
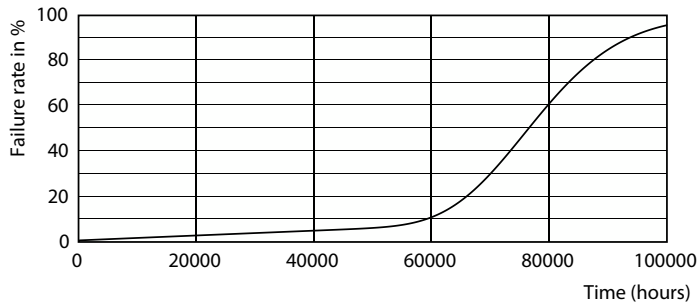
Lumen Maintenance Diagram - MAS LEDtube 600mm HO 8W865 T8



FailureRate

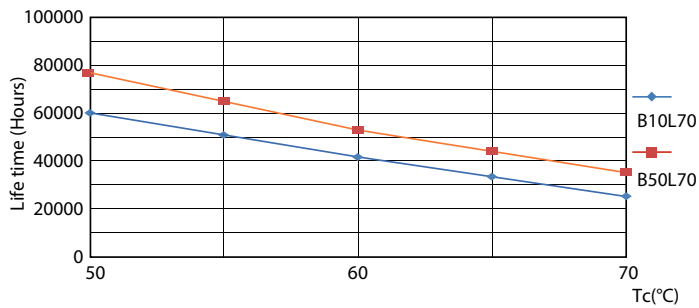
# MASTER LEDtube EM/Mains

## Lifetime



Life Expectancy Diagram

Lumen Maintenance Diagram - MAS LEDtube 600mm HO 8W865 T8



LifetimeVsTc

